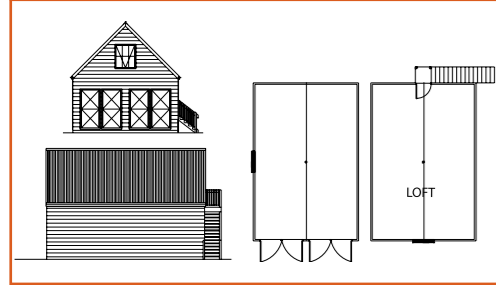
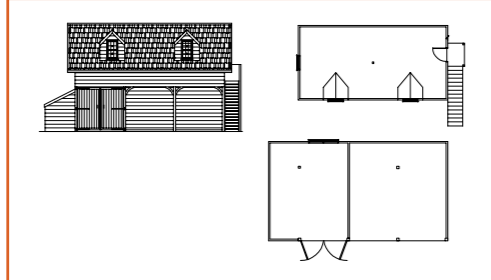


Silverton GARAGE



Available in: 9.0m x 6.0m 108m²
9.0m x 9.6m 140m²

Oakridge FRAMED BARN



Available in: 6.0 x 10.8m 106m²



Stable OPTION

Our Westerner and Farmer Barns are also available in a Stable Option, using larger framing timbers to cater for the typical 4x3.6 metres stall size. We have also increased the height of the barn to 2.7 metres. A loft can be added for use as an office or storage, barn doors can be fixed at one or both ends and

louvre vents fitted to each stall for ventilation. Provision can also be made for tack and feed rooms, along with external stairs to preserve the internal stable layout.

We can also provide a high quality stable kit for the interior. These kits are galvanised steel complete with sliding doors and 35mm hardwood lining that are certain to satisfy even the most astute horse owner's requirements.



BARNs

Visit our Displays

OFFICER VIC
389 Princes Hwy
(cnr Bayview Rd)
Open 7 Days 10.30am-4.30pm
or by appointment
Tel (03) 5943 1120

DEER PARK VIC
1229 Western Hwy
(via Palm Springs Rd, Off Christies Rd)
Open 7 Days 10.30am-4.30pm
or by appointment
Tel (03) 8390 2311

Head Office

MORWELL VIC
8 Firmins Lane
Open Mon-Fri 8.30am-5pm
Tel (03) 5133 0799

Or talk with an Agent

QUEENSLAND
Tel 0438 056 133

NSW, ACT & WA
Tel (03) 5943 1120



**HOMES
&
BARNs**

Alternate
Dwellings



**HOMES
&
BARNs**

View the entire range of Homes and Barns at: www.alternatedwellings.com.au



POST & BEAM BARN

Post and Beam Barn construction is different to framed style buildings as the design structure is simpler and more economical, allowing you a larger building for less cost. These barns are best suited to uses such as farm machinery storage, workshop or stables etc. Timber floors are not suited to post and beam barns which are better served by concrete or earthen floors. Post and Beam Barns are built with vertically overlapped treated pine boards.



FRAMED BARN

Framed Barns are constructed in exactly the same modular system as our houses without the amount of regulated detail required for a home. The kits come with pre-assembled walls that are easily lined for more domestic applications and can be adapted to concrete and timber floors. Framed barns are clad in treated pine boards which can be mounted either horizontally as weatherboards or vertically overlapped.

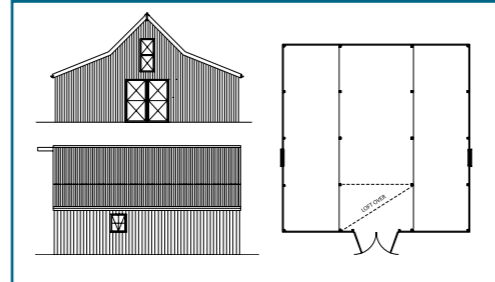


Alternate Dwellings have been a leading light in barn manufacturing for over fourteen years. A fourth generation building family since 1920, we have developed a unique building system and manufacturing process that has combined to produce the wonderful range of barns you will find over the next few pages. A 100% Australian product, we produce everything from the raw product to the finishing touches at our factory in Morwell, Victoria.

This enables us, along with the latest environment friendly termite and weather treatments, to truly guarantee the product we make. A product renowned for its individual style, high quality and easy construction.

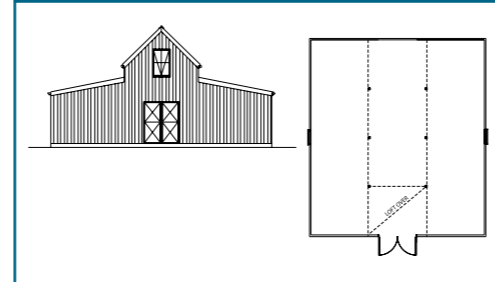
All of our barns are two storey and come with a loft of 45° pitch roof, giving you a versatile alternative to the tin or steel shed (standard steel sheds have a 10° roof pitch and no provision for a loft).

Westerner POST & BEAM BARN



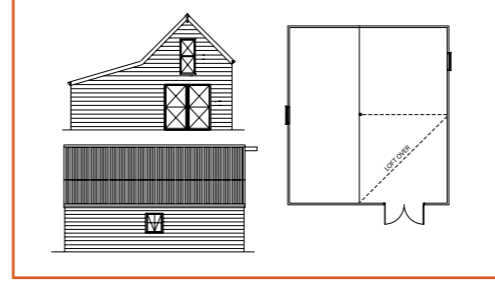
Available in:	10.0m x 7.5m	85.00m ²
	10.0m x 10.0m	110.00m ²
	10.0m x 12.5m	135.00m ²

Farmer POST & BEAM BARN



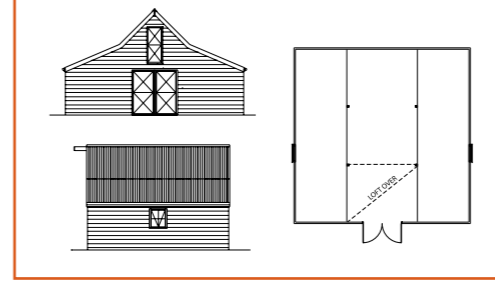
Available in:	10.8m x 7.5m	90.00m ²
	10.8m x 10.0m	117.00m ²
	10.8m x 12.5m	144.00m ²

Gippslander FRAMED BARN



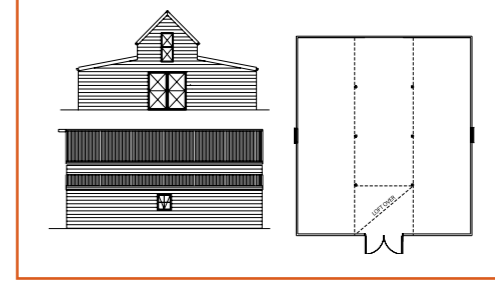
Available in:	6.3m x 7.2m	58m ²
	7.2m x 9.0m	81m ²
	9.0m x 9.0m	101m ²
	9.0m x 12.0m	135m ²

Westerner FRAMED BARN



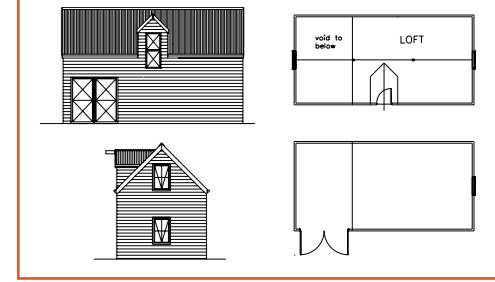
Available in:	11.2m x 10.0m	125m ²
	11.2m x 12.0m	147m ²
	13.5m x 12.0m	176m ²

Highlander FRAMED BARN



Available in:	10.8m x 9.0m	108m ²
	10.8 x 12.0m	141m ²
	13.5 x 12.0m	176m ²

Old Mill FRAMED BARN



Available in:	9.0m x 4.5m	68m ²
	12.0m x 4.5m	95m ²